

Apt 5 Fairway House 62a Maitland Avenue, Chorlton, Manchester, M21 7WH

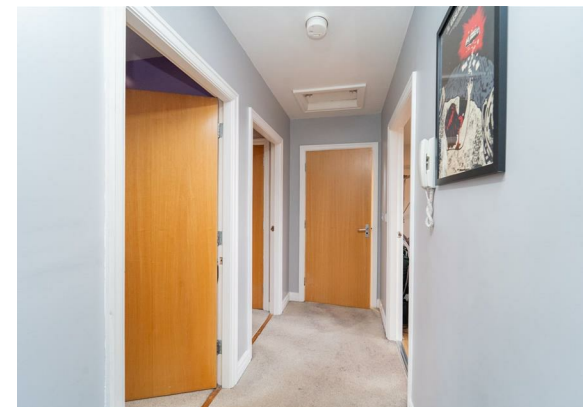


**JP&Brimelow**  
ESTATE AGENTS

# Offers In The Region Of £195,000




\*\*\*VIDEO TOUR AVAILABLE\*\*\* A delightful & spacious, TWO DOUBLE BEDROOM, top floor apartment forming part of this modern development set back on Maitland Avenue in Chorlton. Ideally positioned near Chorlton Water Park, Chorlton Park, and Chorlton Golf Club, this property offers convenient access to transport links, including the Metrolink and bus routes on Barlow Moor Road, providing easy connections to Manchester City Centre and Manchester International Airport. The location is perfect for enjoying the amenities of both West Didsbury and Chorlton, as well as being close to local primary schools, parks, and the motorway network. In brief the accommodation consist of; A communal entrance hallway with stairs leading to all floors, a private entrance hall, a spacious open plan lounge/dining/fitted kitchen, two double bedrooms and a white three-piece shower room. The apartment benefits from gas fired central heating, allocated parking and enclosed communal lawned gardens.





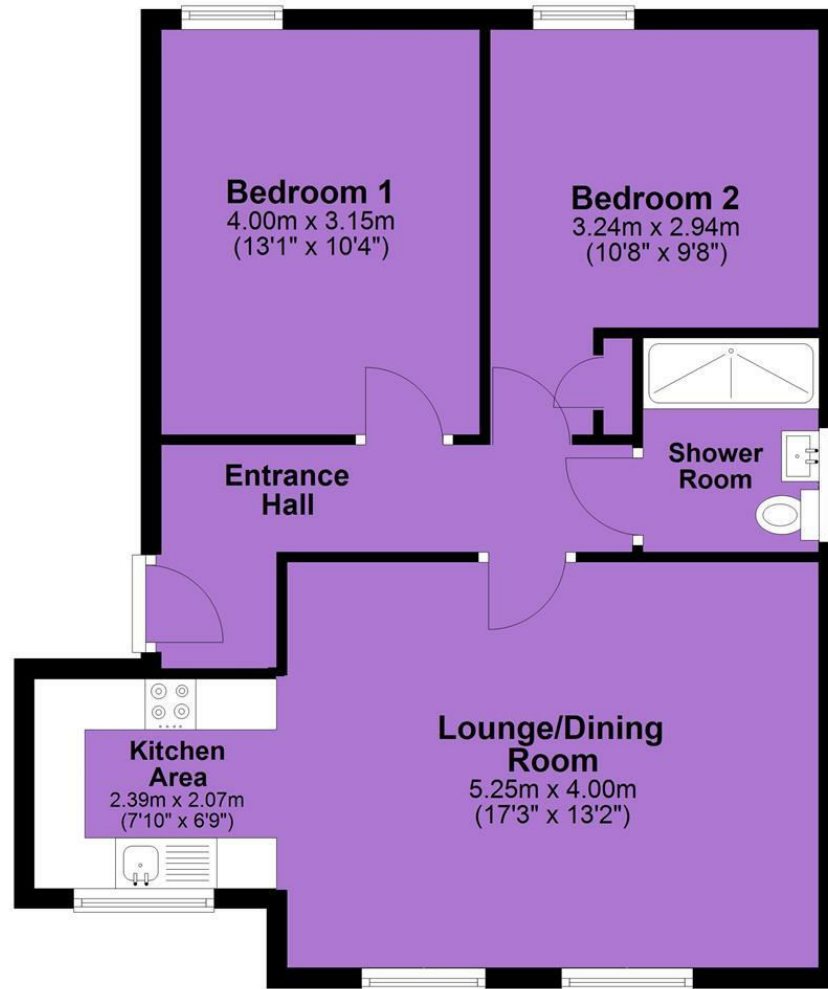
## EPC Chart

Energy Efficiency Rating		Current	Potential
<i>Very energy efficient - lower running costs</i>			
(92 plus)	<b>A</b>		
(81-91)	<b>B</b>		
(69-80)	<b>C</b>		
(55-68)	<b>D</b>		
(39-54)	<b>E</b>		
(21-38)	<b>F</b>		
(1-20)	<b>G</b>		
<i>Not energy efficient - higher running costs</i>			
<b>England &amp; Wales</b>		EU Directive 2002/91/EC 	



Tenure: **Leasehold** Council Tax Band: **B**

## Top Floor



JP & Brimelow Estate Agents Ltd  
430 Barlow Moor Road, Manchester, M21 8AD  
Tel: 0161 8822233  
E: sales@jpbrimelow.co.uk www.jpandbrimelow.co.uk



**JP & Brimelow**  
ESTATE AGENTS

NOTICE: JP & Brimelow Estate Agents Ltd for themselves and for the vendors or lessors of this property whose agents they give notice that:

- (i) the particulars are set out as a general outline only for the guidance of intending purchasers or lessees, and do not constitute, nor constitute part of, an offer or contract;
- (ii) all descriptions, dimensions, references to the condition and necessary permissions for use and occupation, and other details are given in good faith and are believed to be correct but any intending purchasers or tenants should not rely on them as statements or representations of fact but must satisfy themselves by inspection or otherwise as to the correctness of each of them;
- (iii) no person in the employment of JP & Brimelow Estate Agents Ltd has any authority to make or give any representation or warranty whatever in relation to this property.

jpandbrimelowstateagents

@jpandbrimelow